



Peak Contractors Limited
Company Profile





Welcome to Peak Contractors Limited

'organic, proactive, reactive'

“*Peak Contractors Limited was formed in 1961, and from the inception, our clients have been at the core of our business strategy.*”

We are proud of our history of client retention and repeat business and focus on client needs and demands. Therefore to keep up with ever increasing requirements for projects to be successfully delivered on fast track programmes, we have harnessed our company slogan *'organic, proactive, reactive'* and pride ourselves on a level of service expected of a modern Principal Contractor.

We have long and hard earned relationships with all of our key

clients and continually strive to maintain and improve our service wherever possible.

The main source of our business is based within the Public Sector, predominantly carrying out refurbishment projects up to approximately £3,500,000.

We are a member of Construction Line and Exor and have a varied Client base. We have a fully fitted joinery workshop, which produces bespoke joinery products.





To Provide a high quality product to our clients via a professional dedicated team, with a clear view of our clients requirements producing a superior level of quality and service, whilst trading as a profitable organisation.

Our Mission Statement

PROJECT TYPES

We have undertaken a wide range of projects ranging from specialised laboratory refurbishments, often in occupied areas or under confined site restrictions, to bespoke cinema fit-outs, restaurant and catering facilities. These have been executed under various forms of contract and procurement methods.

We carry out the full range of services expected of a modern Principle Contractor, which often includes the co-ordination of complex Mechanical & Electrical Services installations.

MANAGEMENT CONTROLS

During all projects, management controls are vital tools for all parties involved.

We have identified a list of detailed procedures adopted by Peak Contractors Limited to provide efficient project management control :-

1. Project specific Health & Safety Plan
2. Construction Programme
3. On time, up to date valuations with costs regularly updated.
4. Attention to budget control
5. Information required schedule, regularly updated
6. Site Agent feedback with direct liaison to management
7. Questions and answer book for site queries and instructions

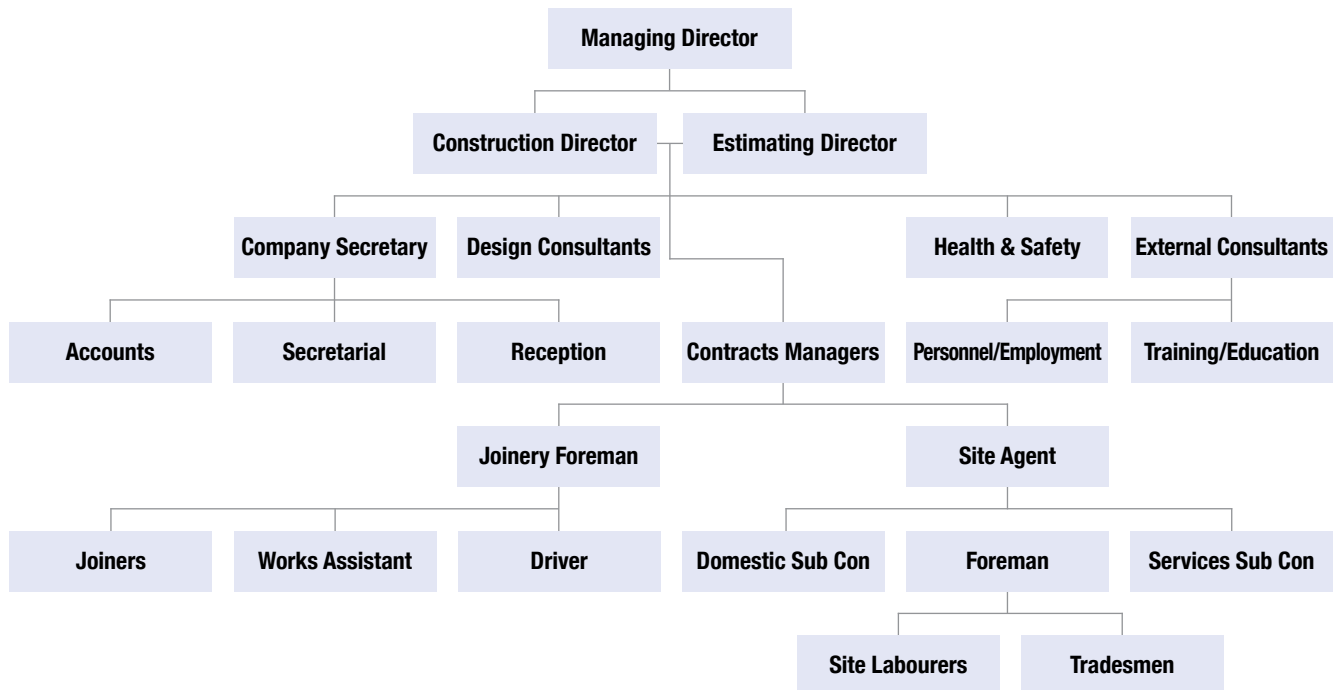
Project specific Health & Safety Plan

A detailed plan is produced by experienced Contracts Managers and is submitted to the clients CDM Co-ordinator prior to works commencing on site.

The project is monitored throughout its duration and the plan is updated as required. COSHH data sheets and Risk Assessments are issued as necessary along with Method Statements where appropriate. Peak Contractors Limited have an exemplary safety record.



Company Structure



Construction Programme

A detailed construction programme is drawn up at the early stages of the project, to provide a useful tool to monitor progress of the project until completion.

Progress is then reported against this programme throughout the works on a regular basis to the clients' design team.

Each project has a job specific programme in a bar chart format produced to give a unique and flexible approach.

Information required schedule

Information required schedules are produced to identify elements of work requiring further details. An initial schedule is produced in line with the contract programme to give latest dates for the receipt of information.

This schedule is then developed and updated throughout the project identifying realistic and practical milestones and providing sufficient response times wherever possible.

Site Agent feedback & Question and Answers books

We have a proactive approach to feedback both to and from our site supervisors. Information liaison is vital to the successful operation and is issued to and from site and head office on a continual basis.

All sites have a triplicate "question and answer" book to record queries that require a response by the design-team, answers can be filled in by the consultant appertaining to the query and the book signed as a record. Copies are issued to all parties concerned.

This simple but flexible approach works well in an industry where adaptability can often be the key to success.

Quality Control

Our approach to quality is paramount to our continued success in order to sustain our client base and attract future business. Our supervisory personnel, both office and site based, are regularly monitored to ensure optimum output and performance.

We continually strive to produce, maintain, and wherever possible, improve the high standards of workmanship our clients are entitled to expect.

To ensure expectations are achieved, our office based Contracts Managers regularly visit our site supervisory personnel, continually monitoring progress, programme and quality throughout the building or refurbishment process.

Our Quality Statement





“ I wish to express my thanks to you and the rest of your team for the excellent job you have done in Gower Street. Despite the difficulties and the additional works found to be necessary, the residence was available on time for our students. The quality of work is very good and the whole building is transformed from its previous condition. We are very grateful to you for the considerable efforts you have taken.”

University College London

CLIENT LIST

Refurbishment work is at the core of our main work sector, specialising in laboratories and bespoke projects.

Our main Client base consists of:-

University College London

Royal Free Hospital

**Imperial College of Science,
Technology & Medicine**

Medical Research Council

Institute of Neurology

Hammersmith Hospital NHS Trust

Institute of Ophthalmology

Essex County Council

Private Clients

Over many years we have established excellent long term relationships with most of our work being carried out for repeat clients.

We have successfully and regularly completed projects for large organisations such as University College London who, due to the nature of their business, often have inflexible deadlines.

With students returning from holidays or starting in their first year, target dates for completion of projects are essential and returning a project late is not an option. To achieve this, we assist and guide clients and their design teams in simple and quick decision making, by offering essential and relevant information required to make accurate informed decisions to mitigate any potential effect on the programme.



Peak Contractors Limited

Capital Place, Lovet Road, The Pinnacles,
Harlow, Essex CM19 5AS

T 01279 641 146

F 01279 450 724

E info@peakcontractors.co.uk

W www.peakcontractors.co.uk

